

TRU-GARD™

Standard & Telescopic Personnel Gates

INSTALLATION MANUAL



Item	Qty	Check 1	Check 2
Gate frame with Hinge plate/2x Hinges attached	1	<input type="checkbox"/>	<input type="checkbox"/>
14G-10x22 Tek screws	6	<input type="checkbox"/>	<input type="checkbox"/>
Hinge adjuster Allen key tool + instruction sheet	1	<input type="checkbox"/>	<input type="checkbox"/>
Hinge Plastic Caps	2	<input type="checkbox"/>	<input type="checkbox"/>
10G-16x16 Tek Screws - <i>(Telescopic Gate only)</i>	4	<input type="checkbox"/>	<input type="checkbox"/>



Tru-Gard™ making workplaces safer



- When receiving goods on site, please check all packages immediately for damage or repackaged goods that may have been damaged during shipping.
- Any damage must be reported to Tru-Bilt Industries Ltd within 24 hours of receiving product.

TRU-BILT®
INDUSTRIES

New Zealand: 0800 144 999

Australia: 1800 144 888

Website: www.tru-gard.com



Contents

Safety Warnings 3

Installation Instructions 4 – 6

Related Products 7

Warranty 8

Preface

- Installation of the Tru-Gard™ Personnel Gate is for experienced installers only and this manual must be followed carefully.
- All warnings and safety precautions must be followed at all times.
- A selection of hand and power tools will be required depending on the type of fixing available.
- Tru-Bilt Industries Ltd reserves the right to change product design and specifications without notice.



Safety Warning

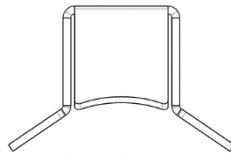


- All necessary safety precautions must be carried out to ensure a safe working environment for yourself and those around you.

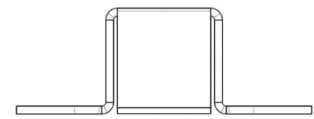
⚠ WARNING! - Failure to follow precautions in this manual may result in severe personal injury or death.

Installation Instructions

- Both the TRG1100 Standard Gate and the TRG800-TS Telescopic Gate use a similar mounting technique and parts.
- Alternative brackets are available to mount gates on a range of surfaces including flat surfaces and bollards.
- All gates come as standard with a bracket attached for the TR010 post mount. If you have opted for a flat surface wall bracket or bollard mounted bracket, you will first need to remove the existing bracket from the gate and fit the alternative bracket which will be supplied separately, before continuing the installation.
- Disregard the post centre measurements if using the TRG800-TS gate.



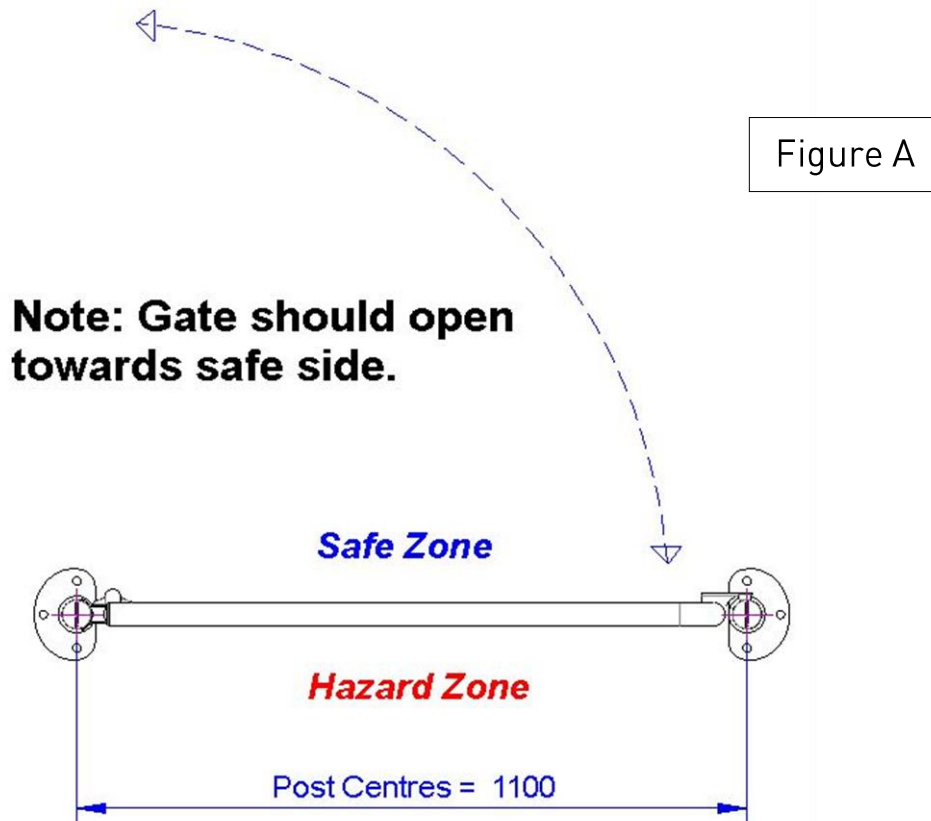
Bollard Mount



Wall Mount

Step 1 – Install the Gate Mount TR010 post

- Mark out the holes for the TR010 post that you intend to mount gate on. Ensure the gate will fit the opening, or if using TRG800-TS for a custom length, make sure the gate will reach your intended stop post before installing post.
- Drill holes and mount the post to the floor with the screw bolts supplied.



Step 2 – Mount the Gate Frame and Stop Post

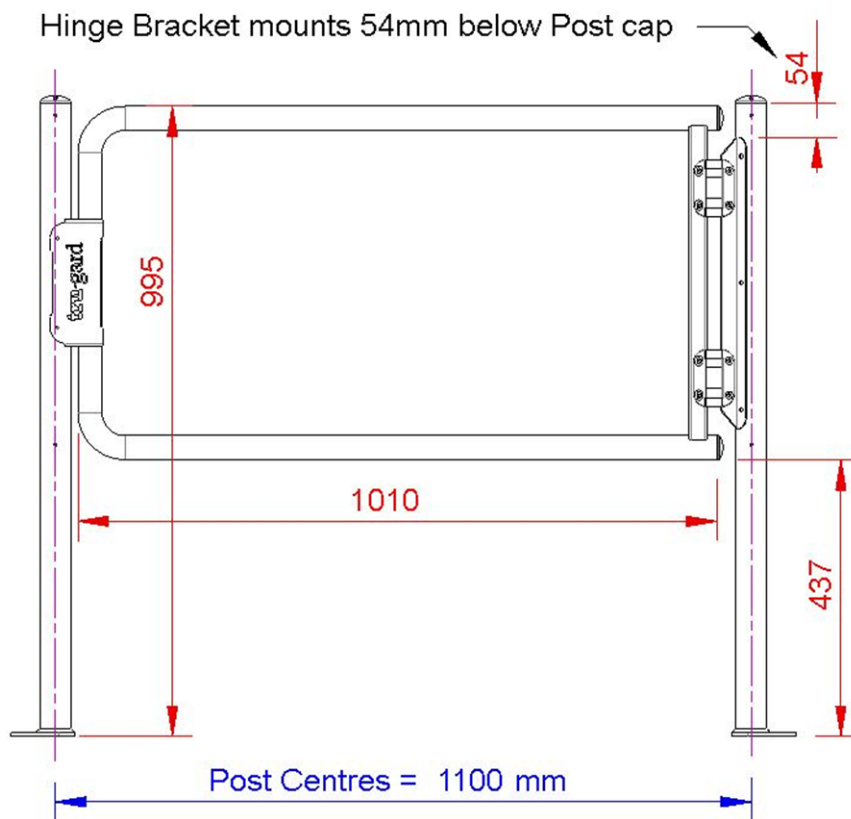


Figure B



Figure C

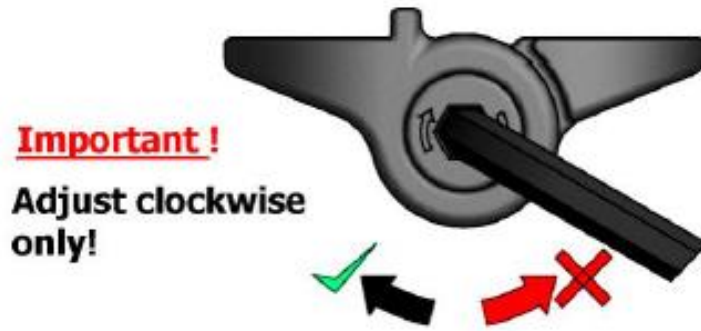
- Mark 54mm down from the top of the TR010 post you are attaching the gate to.
- Position the gate assembly against the post so the top of the hinge plate is flush with the 54mm mark, ensure the gate is straight and level.
- Mount onto the post with the 6 supplied tek screws using the pre-drilled holes in the hinge plate.
- Install the stop post using the same procedure in Step 1.

Step 3 – Length Adjustment (Telescopic Gate Only)

- Slide the adjustable pipe section in or out to the desired length, move it carefully to avoid damaging the coating.
- Fix the top and bottom tubes in place with the supplied tek screws (x2 top and bottom) make sure both tubes are parallel and the gate end is vertically straight.

Step 4 – Tension Hinge & Test Operation

Figure



- Use the supplied Allen key to tension both hinges as shown in Figure D above.
- **IMPORTANT:** Only apply 4 clicks of clockwise tension on each hinge. More tension will damage the hinge, less will mean the gate rebounds too much.
- Test the operation. The gate should not rebound past halfway open when released from an angle of 90° to the closed position.
- Fit the 2 small plastic caps to cover the hinge adjuster holes.

Double/Latched Gate Setup

- Mount gates to posts (Step 1 - 2) - see Figure E below for placement.
- To switch the hinge side, mark and drill new hinge holes in the mounting bracket.
- Bollard or wall mount brackets can also be used to mount latched gates.

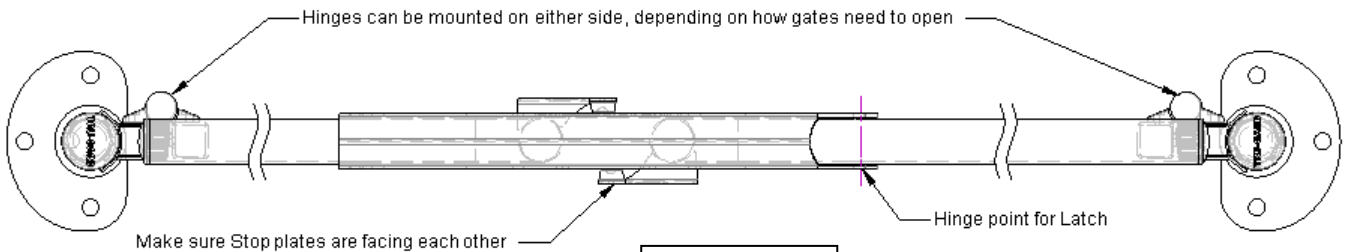


Figure E



Figure F



Figure G

Related Products

TRU-GARD™ Certified Barrier

Tru-Gard™ is a certified barrier system, ideal for traffic management programs and providing protection against forklift damage to buildings and assets and exceptional safety for personnel.

See our separate instruction manual for the installation of Tru-Gard™ Certified Barrier.



TRU-GARD™ Hand Rail System

The Tru-Gard™ Hand Rail system can mount on top of the Tru-Gard™ Barrier system or stand on its own. It is a multi-purpose safety system designed to prevent slips and other pedestrian hazards.

See our separate instruction manual for the installation of Tru-Gard™ Hand Rail.





10-Year Warranty

Tru-Bilt Industries Ltd warrants that your Tru-Gard™ Personnel Gate will be free from defects in materials and workmanship under normal use for a period of **ten years**, provided the purchaser installs, maintains and operates the Personnel Gate in accordance with this owner's manual. If a warranty issue should arise, a Warranty Claim Form is available from Tru-Bilt and must be completed. Photos are also required to support the claim. Travelling costs and labour are not claimable.

When a warranty claim is accepted, Tru-Bilt will repair or replace parts, or complete products, whichever Tru-Bilt Industries Ltd deems suitable. Tru-Bilt Industries Ltd retains the right to reject any warranty claim for failure or damage caused by improper use or abuse.

Contact Tru-Bilt for your signed official warranty document: info@tru-bilt.co.nz

TRU-BILT®
INDUSTRIES

New Zealand: 0800 144 999

Australia: 1800 144 888

Website: www.tru-gard.com

October 2021



Tru-Gard™ making workplaces safer